



product guide - crawler cranes

quality
efficiency safety
diversity

AAA is the distributor for new IHI Hydraulic crawler cranes, the newly designed Japanese cranes with revolutionary performance. IHI cranes offer top-class lifting performance. The cranes have wide visibility and deluxe control cabs. It has many advanced operation systems, to name a few, Moment Limiter with Graphic Display, Shockless Stop System to reduce Shocks, Powerful Swing, Full Power-Efficient Hydraulic Control for Precision Works, Fuel-Efficient Automatic Engine Deceleration System, Fatigue-free brake operation for main and auxiliary drums, etc.

IHI crawler cranes luffing jib attachments can handle both main and jib hook at the same time. So there is no need to switch machines for different applications. IHI cranes are easy to assemble, disassemble and transport due to its quick and easy works feature. Currently IHI crawler cranes offer products ranging from 50ton to 250ton.

AAA has specialized sales and service department with factory trained professional staff that offer excellent service with the lowest prices. AAA is committed to providing its customer with continuous product availability, superior technical support and unparalleled customer relationship management to keep its customers IHI crawler cranes operating productively.

Specification

CCH500T 50Ton

Technical Details

Engine	
Make	Hino Motor
Model	J08C-UD (with turbo) diesel engine 6-cylinder, water cooled, overhead valve
Type	Direct injection diesel engine

Crane Details

Max. lifting capacity x working radius	50 metric ton x 3.5m
Max. boom length	11.3~34.4

Rope Speed

Main drum hoist/ lowering	*100/ 50m/ min
Aux. drum hoist/ lowering	*60m/ min

Part Line

Hook block capacity x part line	50ton x 10
Hook block capacity x part line	6ton x 1
Counter weight	15.7 ton
Total operating weight	55.5 ton
Average ground bearing pressure	71 kPa (0.72kg/cm ²)

*The rope speed changes depending on the load



CCH500T 50Ton

Specification

CCH500-3II 50Ton

Technical Details

Engine

Make	Hino Motor
Model	J08C-UT (with turbo) diesel engine 6-cylinder, water cooled, overhead valve
Type	Direct injection diesel engine

Crane Details

Max. lifting capacity x working radius	50 metric tonx 3.7m
Max. boom length	51m
Max. boom length (main+jib boom)	51 (42m boom+15mjib)

Rope Speed

Main drum hoist/ lowering	*100/ 70~ 50/ 35m/min
Aux. drum hoist/ lowering	*100/ 70~ 50/ 35m/min
Boom drum hoist/ lowering	*60m/min

Part Line

Hook block capacity x part line	50ton x 10
Hook block capacity x part line	5.8ton x 1
Boom drum hoist/ lowering part line	12
Counter weight	16 ton
Total operating weight (with 12m boom)	49.4 ton
Average ground bearing pressure	0.64kgf/cm ²

*The rope speed changes depending on the load



CCH500-3II 50Ton

Specification

CCH700 70Ton

Technical Details

Engine

Make	CUMMINS
Model	QCH6.7 (with turbo) diesel engine 6-cylinder, water cooled, overhead valve
Type	Direct injection diesel engine

Crane Details

Max. lifting capacity x working radius	70 metric tonsx3.8m
Max. boom length	54m
Max. boom length (main+jib)	63m (45m boom+18m jib)
Max. luffing boom length (post+jib)	73m(42m tower+31m jib)

Rope Speed

Main drum hoist/ lowering	*100/80~50/40 m/min
Aux. drum hoist/ lowering	*100/80~50/40 m/min
Boom drum hoist/ lowering	*60m/ min

Part Line

Hook block capacity x part line	70tonsx10
Hook block capacity x part line	7tonsx10
Boom drum hoist/ lowering part line	14
Counter weight	25steel
Total operating weight (with 12m boom)	64.7ton
Average ground bearing pressure	76.4k Pa (0.78kgf/cm ²)

*The rope speed changes depending on the load



CCH700 70Ton

Specification

CCH1200-5 120 Ton

Technical Details

Engine

Make	Hino Motor
Model	K13C-UV (with turbo) diesel engine 6-cylinder, water cooled, overhead valve
Type	Direct injection diesel engine

Crane Details

Max. lifting capacity x working radius	120 metric tonx5.0m
Max. boom length	75m
Max. boom length (main+jib)	88m (63m boom+25m jib)
Max. luffing boom length (post+jib)	95.25m(51.25mtower+44mjib)

Rope Speed

Main drum hoist/ lowering	*100/50 ~ 50/25m/min
Aux. drum hoist/ lowering	*100/50 ~ 50/25m/min
Boom drum hoist/ lowering	*60~30m/min

Part Line

Hook block capacity x part line	120ton x 10
Hook block capacity x part line	11ton x 1
Boom drum hoist/ lowering part line	14
Counter weight	50ton
Total operating weight (with 18m boom)	121.5ton
Average ground bearing pressure	0.92kg/cm ²

*The rope speed changes depending on the load



CCH1200-5 120Ton

Specification

CCH1500-5 150 Ton

Technical Details

Engine	
Make	Hino Motor
Model	K13C-UV (with turbo) diesel engine 6-cylinder, water cooled, overhead valve
Type	Direct injection diesel engine

Crane Details

Max. lifting capacity x working radius	150 metric tonx5.0m
Max. boom length	84m
Max. boom length (main+jib)	103m (72m boom+31m jib)
Max. luffing boom length (post+jib)	108m (57m tower+51m jib)

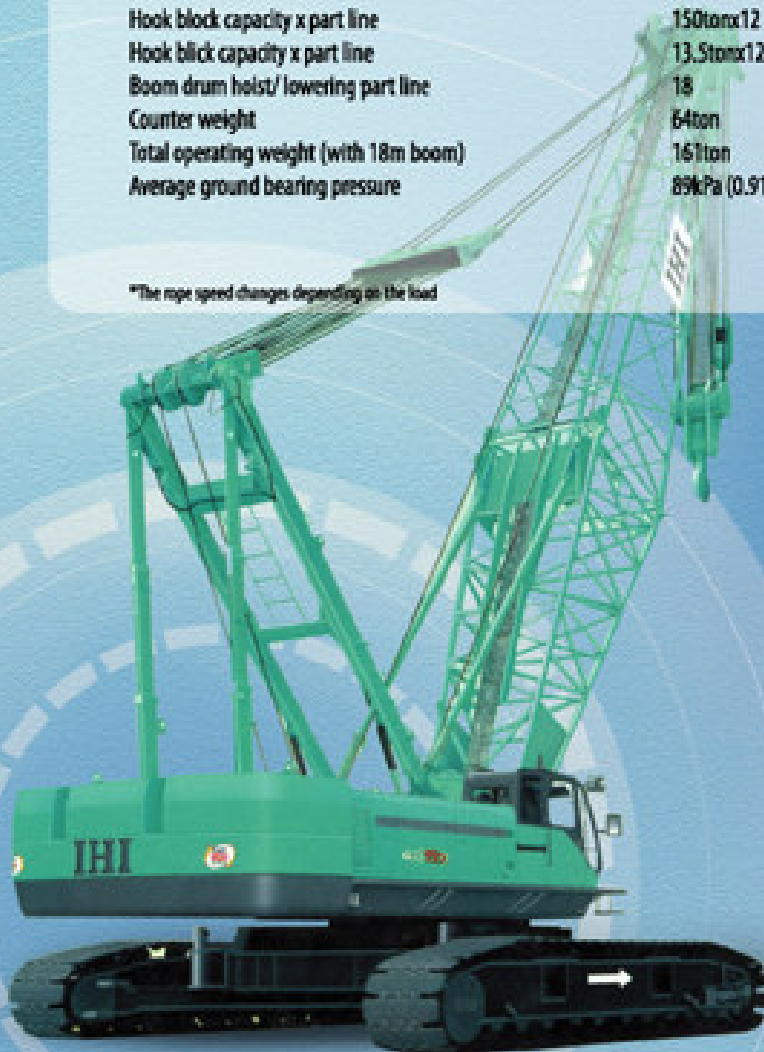
Rope Speed

Main drum hoist/ lowering	*110/55 ~ 55/28m/min
Aux. drum hoist/ lowering	*110/55 ~ 55/28m/min
Boom drum hoist/ lowering	*32 ~ 14m/minx2

Part Line

Hook block capacity x part line	150tonx12
Hook block capacity x part line	13.5tonx12
Boom drum hoist/ lowering part line	18
Counter weight	64ton
Total operating weight (with 18m boom)	167ton
Average ground bearing pressure	89kPa (0.91kgf/cm ²)

*The rope speed changes depending on the load



CCH1500-5 150Ton

Specification

CCH2000-5 200 Ton

Technical Details

Engine

Make	Hino Motor
Model	K13C-UV (with turbo) diesel engine
	6-cylinder, water cooled, overhead valve
Type	Direct injection diesel engine

Crane Details

Max. lifting capacity x working radius	200 metric tonx5.0m
Max. boom length	90m
Max. boom length (main+jib)	103m (72m boom+31m jib)
Max. luffing boom length (post+jib)	111m (60m tower+51m jib)

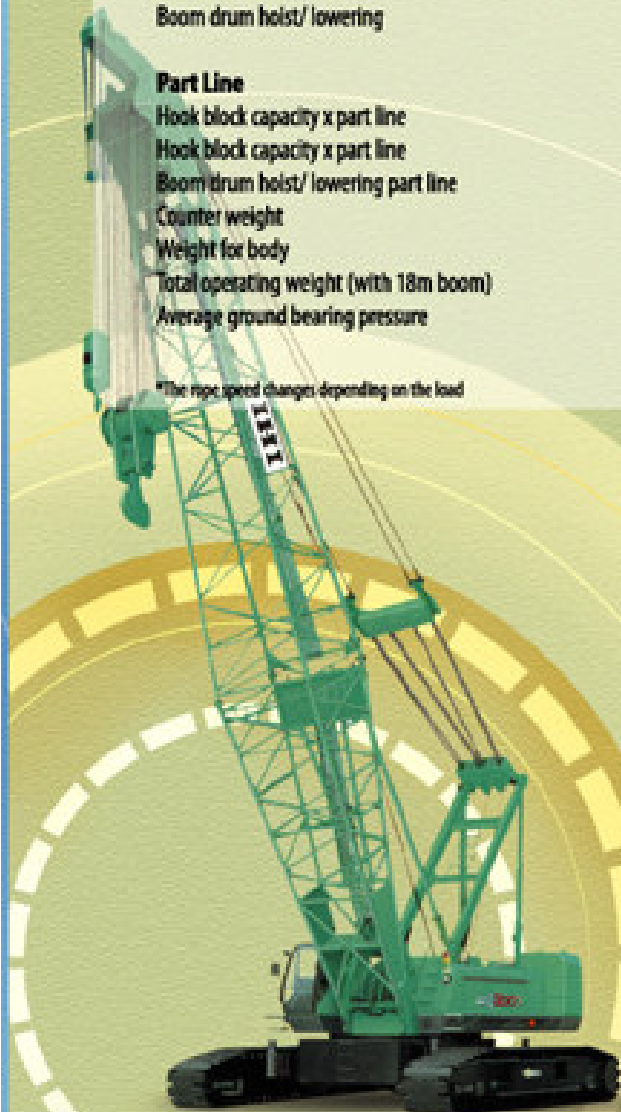
Rope Speed

Main drum hoist/ lowering	*110/55 ~ 55/28m/min
Aux. drum hoist/ lowering	*110/55 ~ 55/28m/min
Boom drum hoist/ lowering	*32 ~ 14m/minx2

Part Line

Hook block capacity x part line	200tonx16
Hook block capacity x part line	13.5tonx1
Boom drum hoist/ lowering part line	18
Counter weight	78ton
Weight for body	16ton
Total operating weight (with 18m boom)	193ton
Average ground bearing pressure	103kPa (1.05kgf/cm ²)

*The rope speed changes depending on the load



CCH2000-5 200 Ton

Specification

CCH2500 -5 250 Ton

Technical Details

Engine

Make	Hino Motor
Model	K13C-UV (with turbo) diesel engine
	6-cylinder, water cooled, overhead valve
Type	Direct injection diesel engine

Crane Details

Max. lifting capacity x working radius	250x5.0m
Max. boom length	90m
Max. boom length, with jib (main+jib)	109m (72m boom+37m jib)

Rope Speed

Main drum hoist/ lowering	*120/60~55/28 m/min
Aux. drum hoist/ lowering	*120/60~55/28 m/min
Boom drum hoist/ lowering	*32~14m/ minx2

Part Line

Hook block capacity x part line	250ton x 16
Hook block capacity x part line	25tonx2
Boom drum hoist/ lowering part line	18
Counter weight	87ton
Total operating weight (with 18m boom)	209.4ton
Average ground bearing pressure	104kPa (1.06kg/cm ²)

*The rope speed changes depending on the load



CCH2500 250Ton

Distributors for new IHI Hydraulic Crawler Cranes 50-250 Ton

UAE | Kuwait | Bahrain | Qatar | Oman | Yemen



AAA CONSTRUCTION EQUIPMENT FZCO.

P.O.Box: 261214, Jebel Ali, Dubai, UAE

Email: mail@aaacrane.ae

Showroom Facility

Tel: +9716-5344988

Fax: +9716-5344977

Service Facility

Tel: +9716-5433224

Fax: +9716-5433313

Crawler Cranes

IHI

Sales • Service • Spares

www.aacrane.com